

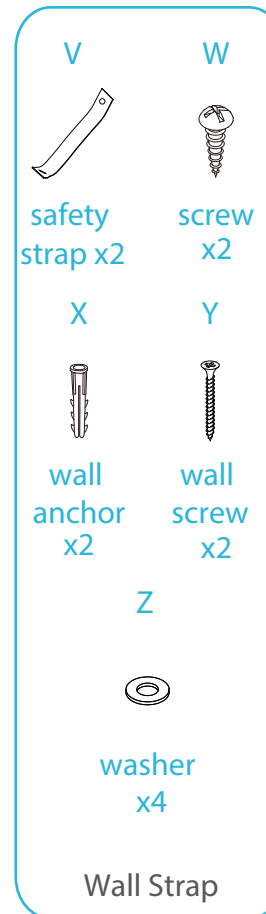
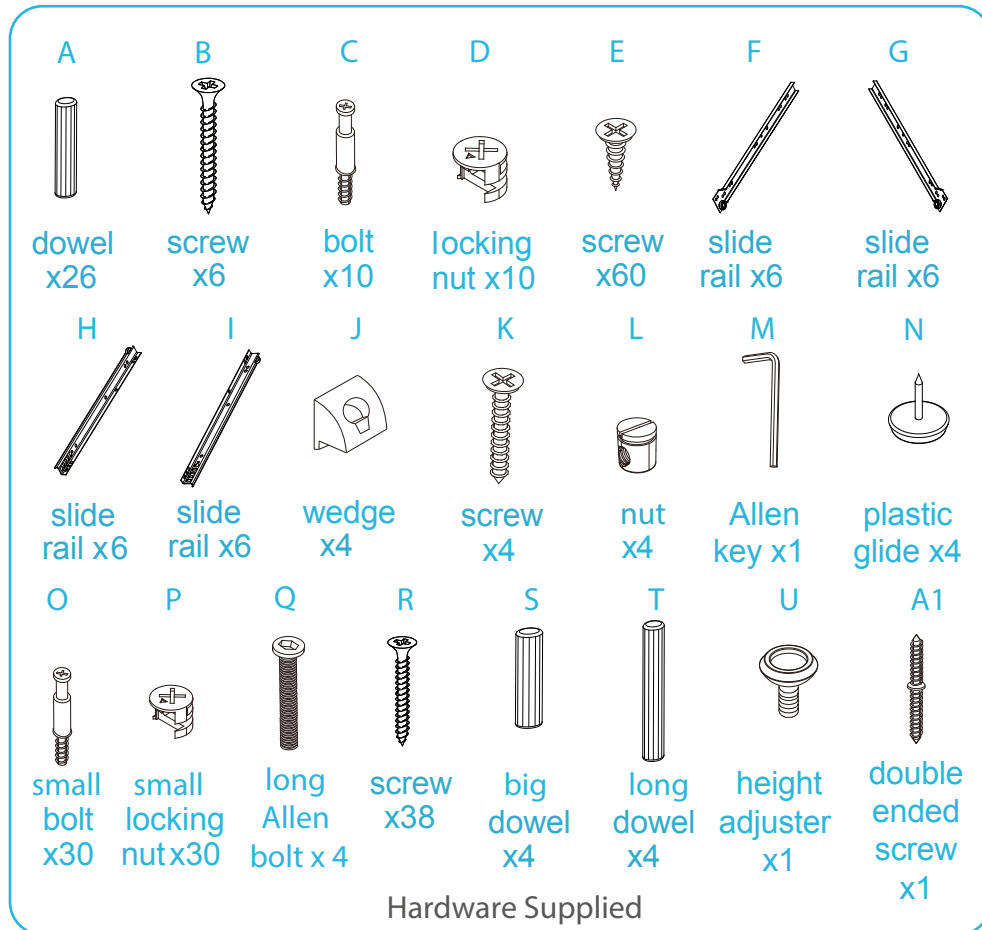
Addi Six Drawer - Wide

Assembly Instructions

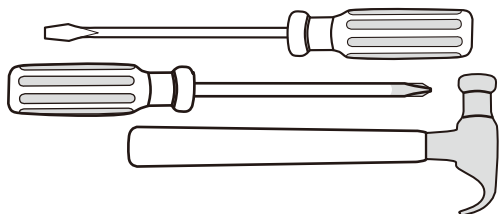
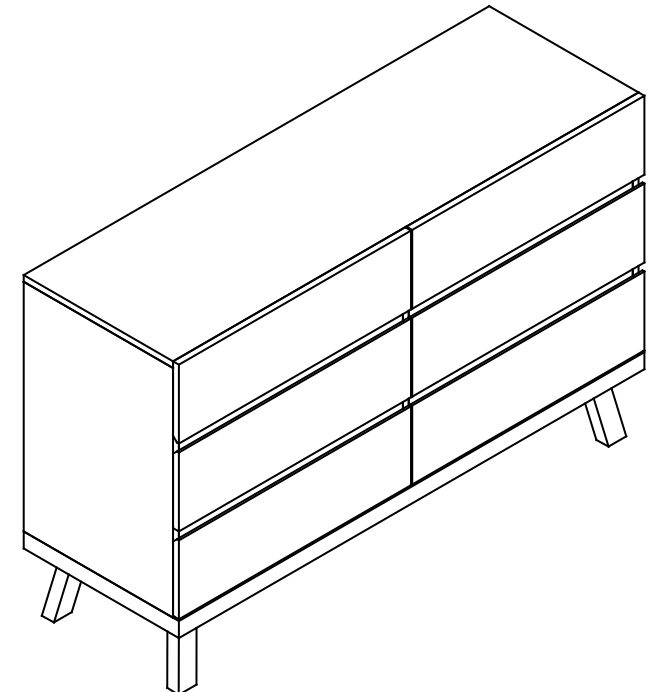
Thank you for your purchase.

Please follow the instructions below for correct assembly.

mocka



WARNING: Any furniture that is not anchored to a wall has the potential to tip over in certain circumstances, i.e. if a child attempts to climb up on the furniture or in the event of an earthquake. Accordingly, we recommend that all furniture is anchored to a wall. We supply a free safety wall anchor with all furniture sold and we recommend these are used to prevent your product tipping. The fixing device provided should fit most wall types, but please note that different wall materials may require different fixing devices from those supplied.



Phillips & Flathead screwdrivers
and hammer required

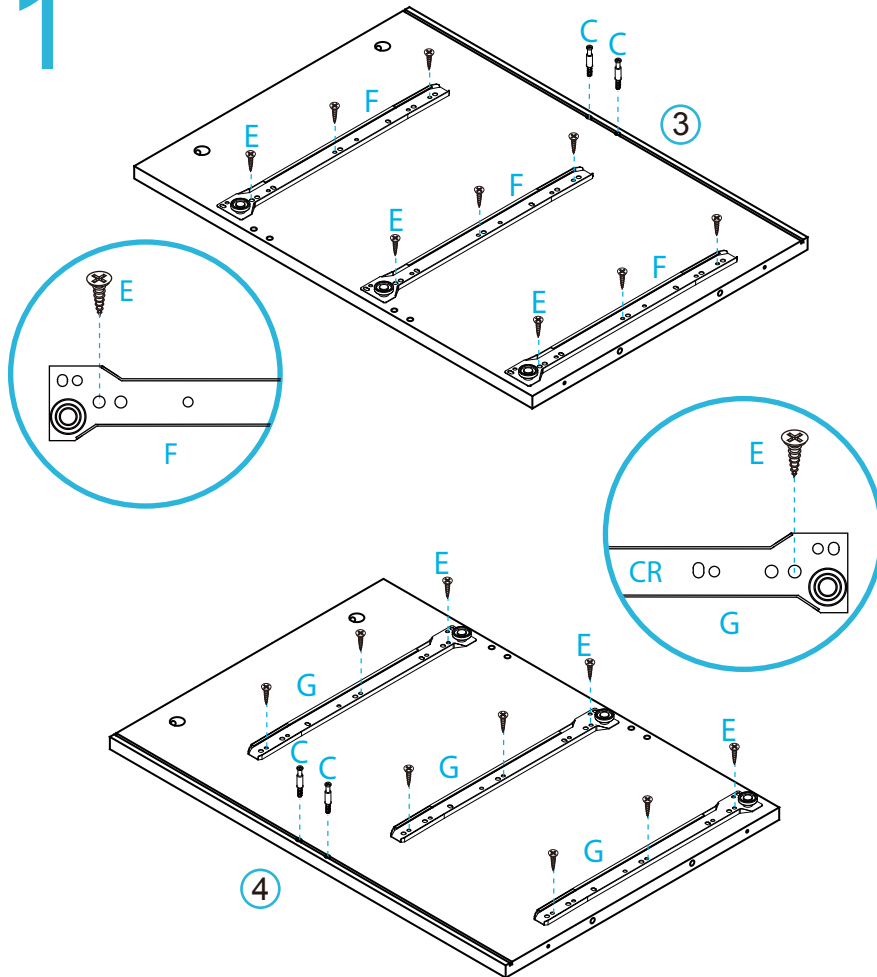
For quicker assembly, we recommend the
use of a power drill on a low-speed setting.

Addi Six Drawer - Wide

Assembly Instructions

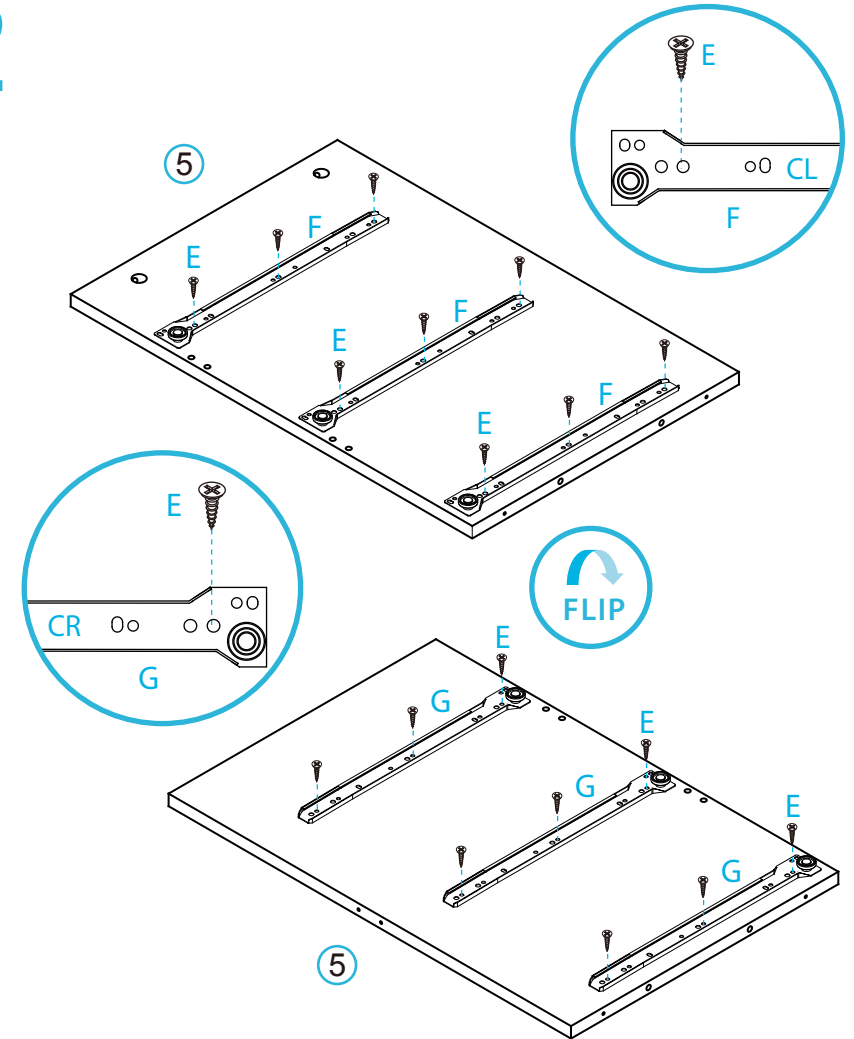
mocka

1



Attach 3x slide rail (F) and 3x slide rail (G) to panels [3] and [4] as shown and secure with 18x screws (E). Tighten with a screwdriver. Insert 4x bolts (C) into panels [3] and [4]. Tighten with a screwdriver.

2



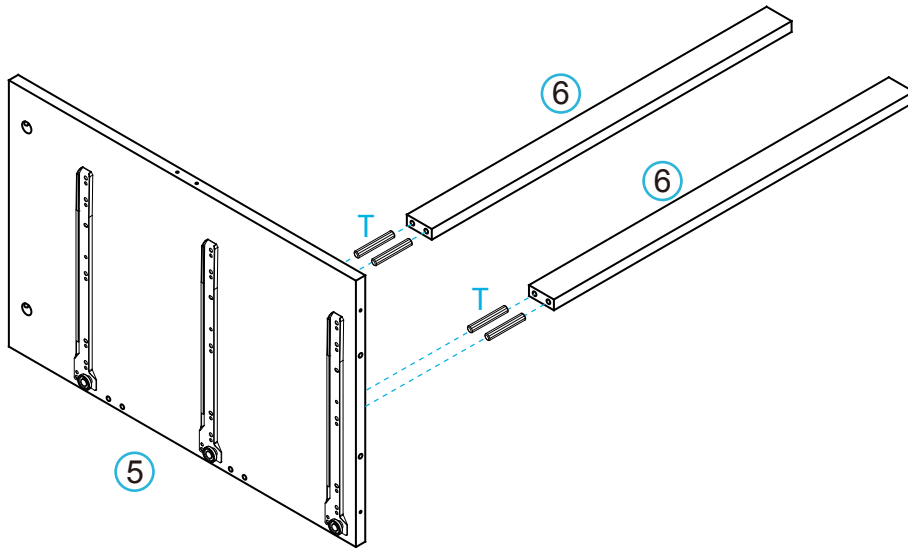
Attach 3x slide rail (G) to panel [5] as shown and secure with 9x screws (E). Flip the panel [5], attach 3x slide rail (F) to the other side of panel [5] as shown and secure with 9x screws (E). Tighten with a screwdriver.

Addi Six Drawer - Wide

Assembly Instructions

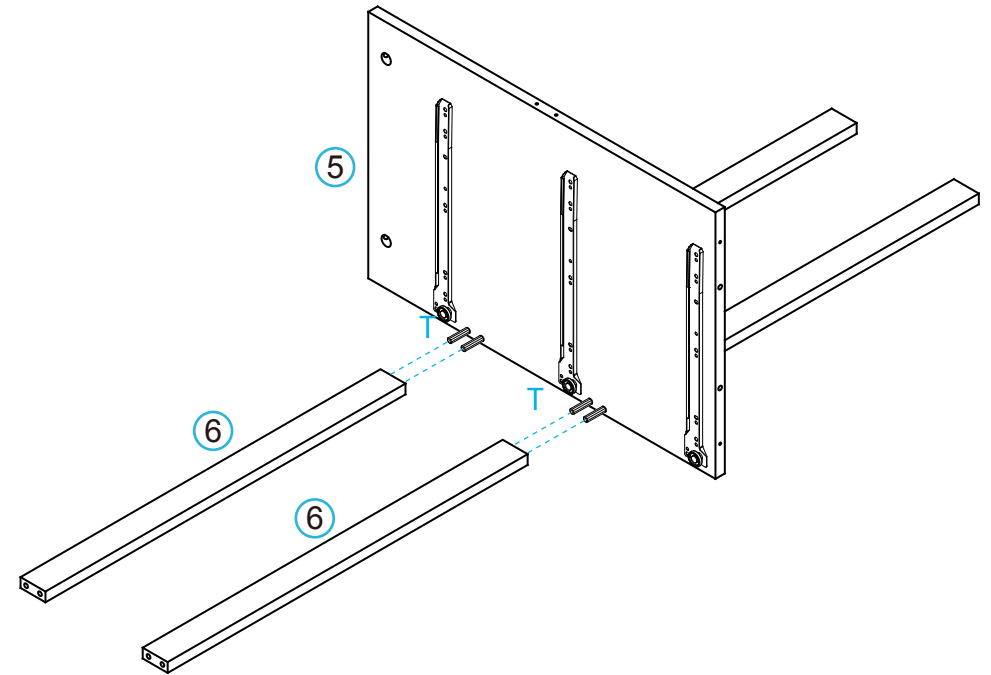
mocka

3



Attach panel [5] to panels [6] with 4x Long dowels (T).

4



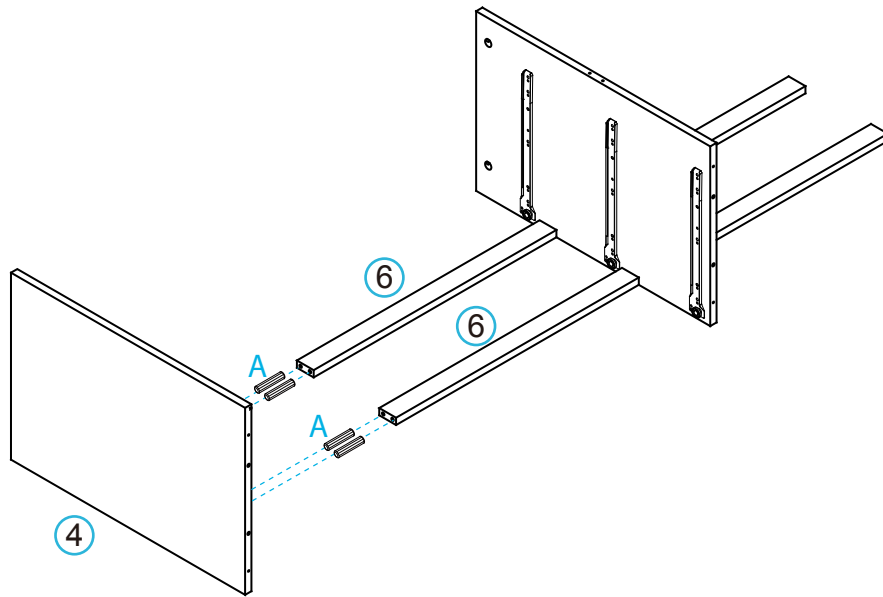
Attach panels [6] to the other side of panel [5] with 4x Long dowels (T).

Addi Six Drawer - Wide

Assembly Instructions

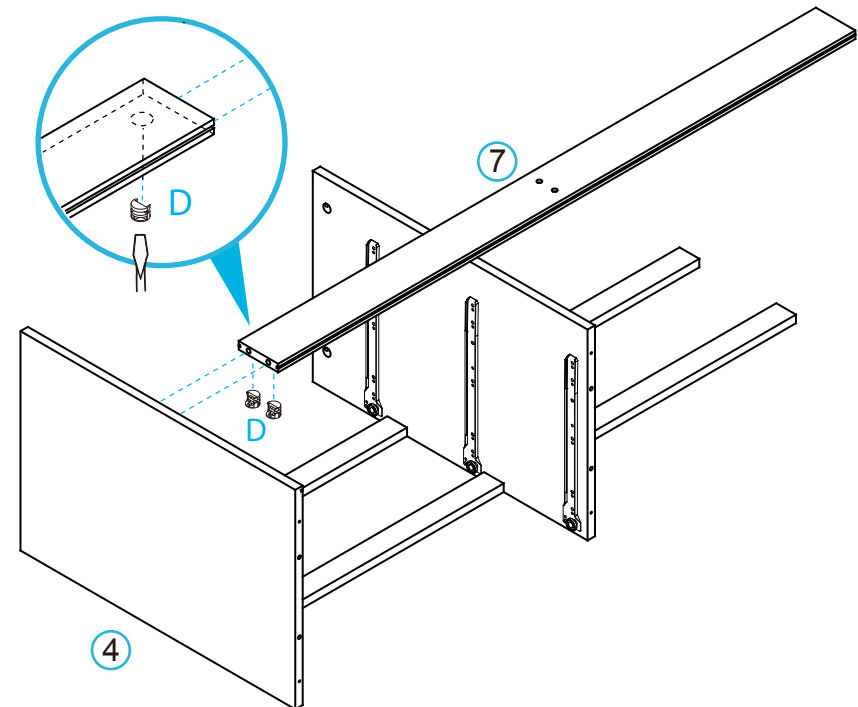
mocka

5



Attach panel [4] to panels [6] with 4x dowels (A).

6



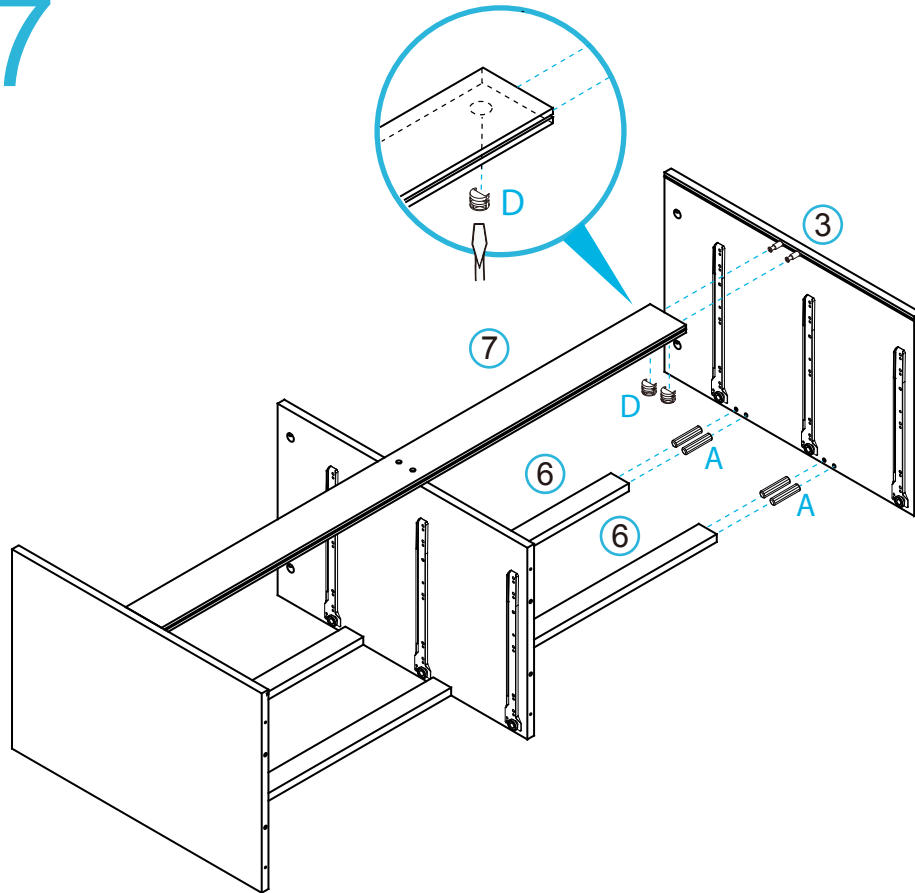
Attach panel [7] to panel [4] and secure with 2x locking nuts (D).
Tighten with a screwdriver.

Addi Six Drawer - Wide

Assembly Instructions

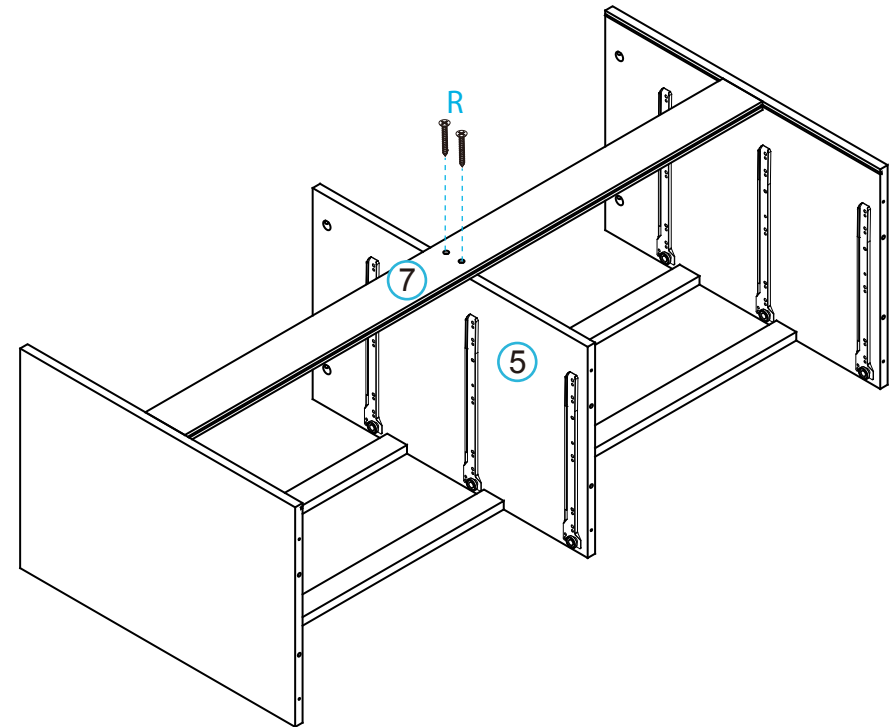
mocka

7



Attach panel [3] to panels [6] and [7] with 4x dowels (A) and secure with 2x locking nuts (D). Tighten with a screwdriver.

8



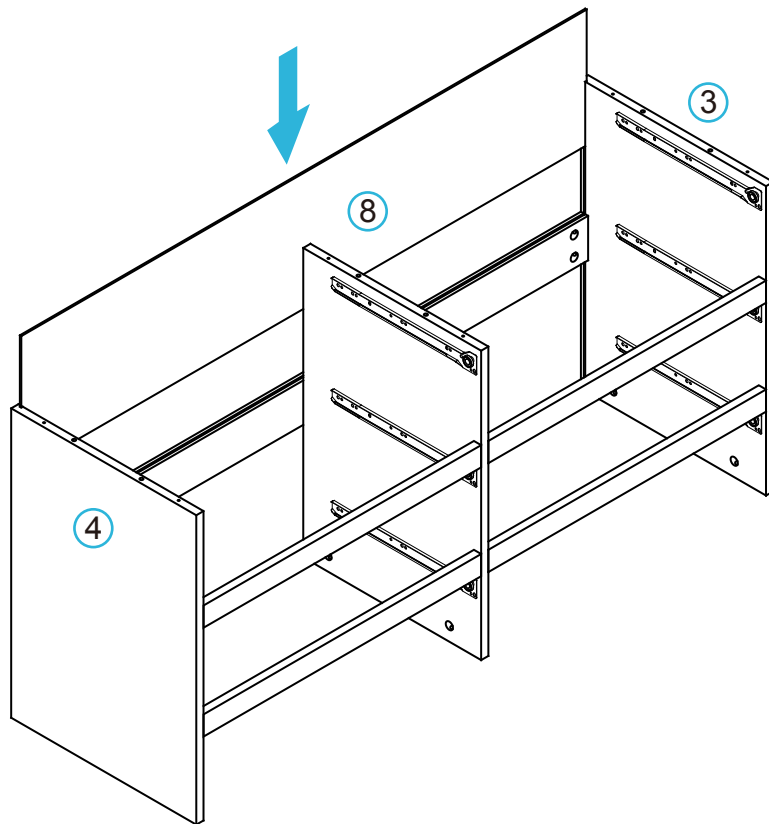
Attach panel [7] to panel [5] and secure with 2x screws (R). Tighten with a screwdriver.

Addi Six Drawer - Wide

Assembly Instructions

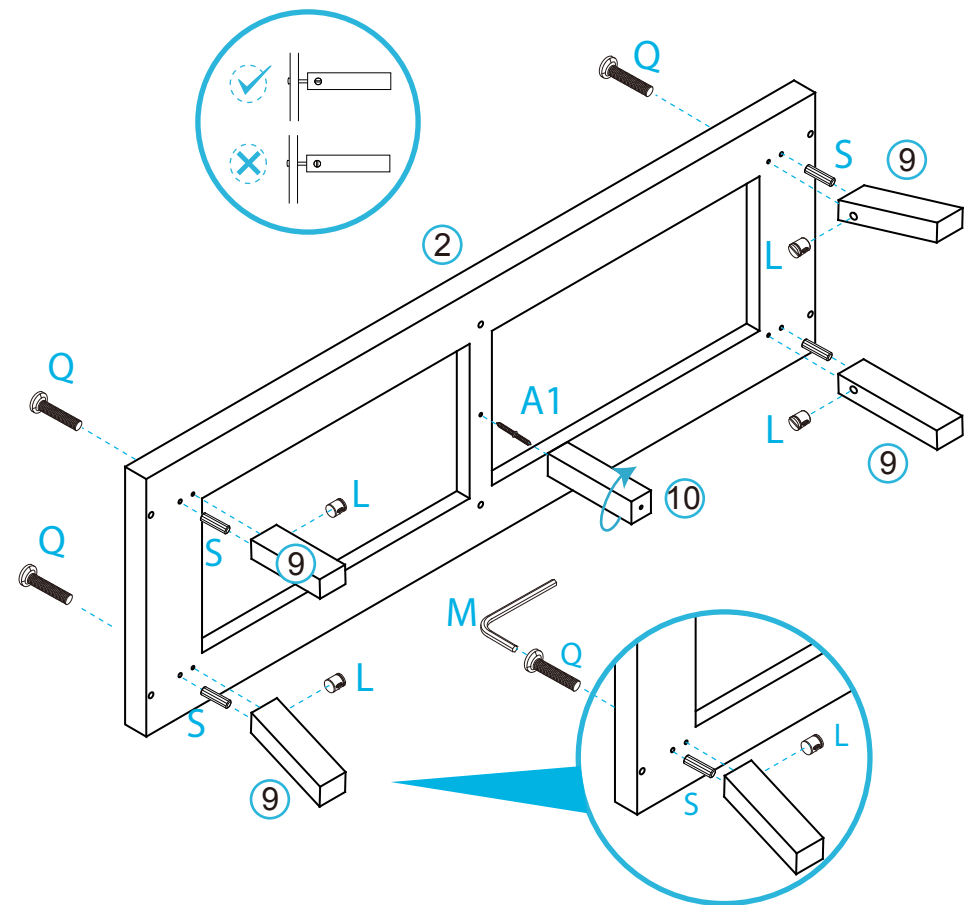
mocka

9



Slide panel [8] between the grooves of panels [3] and [4] to form the back of the unit, as shown.

10



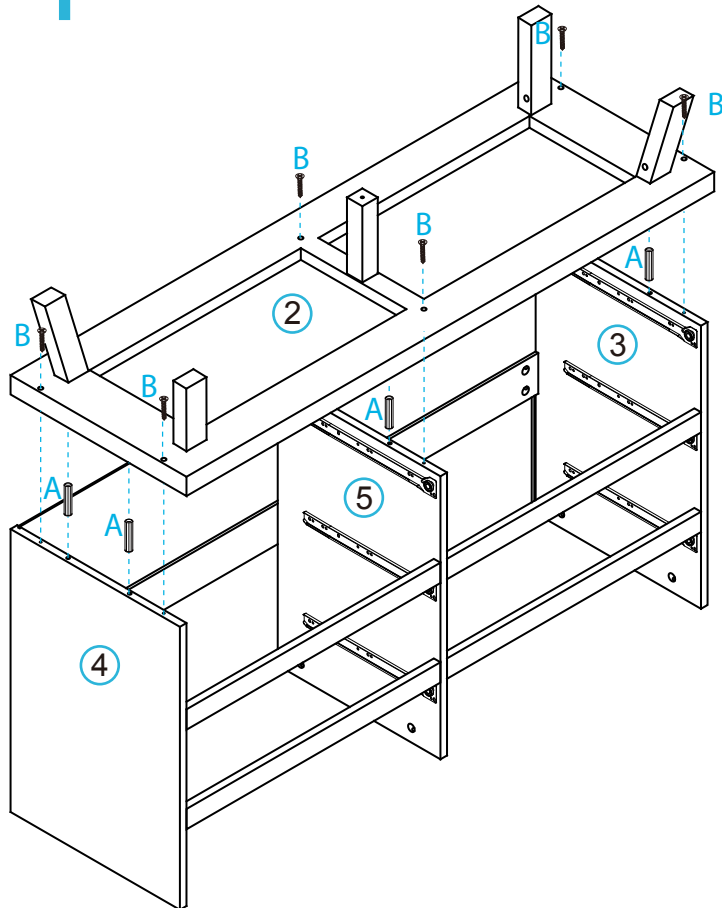
Attach the legs [9] to panel [2] with 4x big dowels (S) and 4x nuts (L) as shown. Secure with 4x long Allen bolts (Q). Tighten with an Allen key (M). Attach support leg [10] to panel [2] and secure with 1x double ended screw (A1).

Addi Six Drawer - Wide

Assembly Instructions

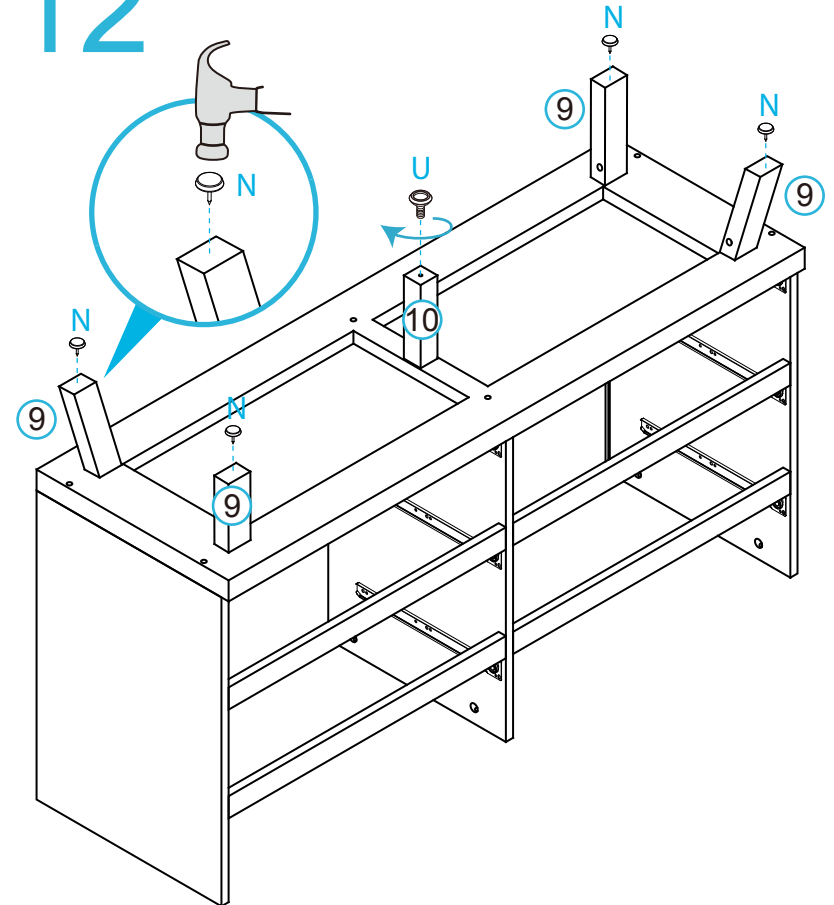
mocka

11



Attach panel [2] to the panels [3], [4] and [5] with 6x dowels (A) and secure with 6x screws (B). Tighten with a screwdriver.

12



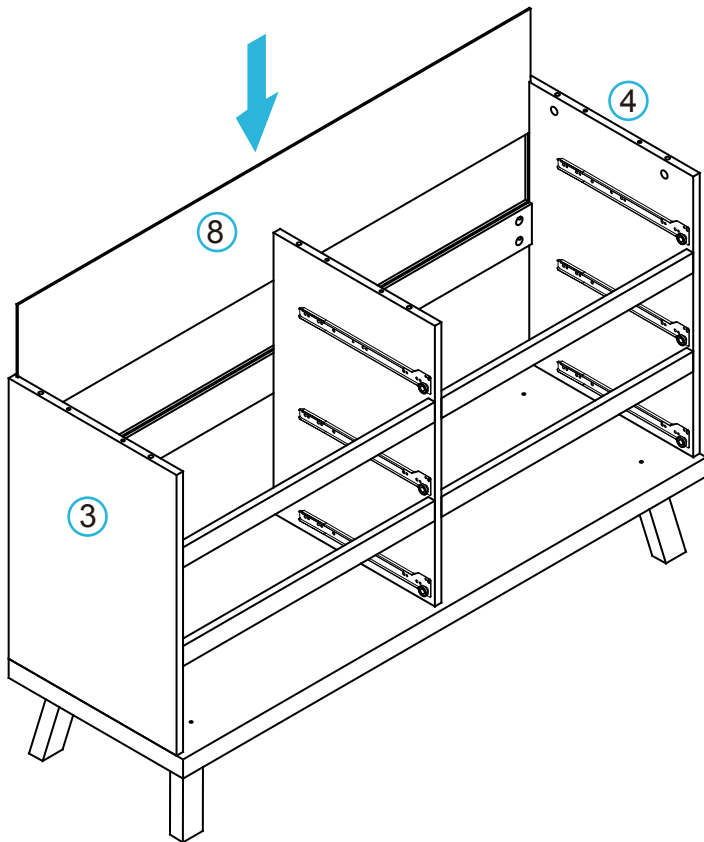
Attach 4x plastic glides (N) to the end of legs [9] and insert the adjuster (U) into the panel [10] as shown.

Addi Six Drawer - Wide

Assembly Instructions

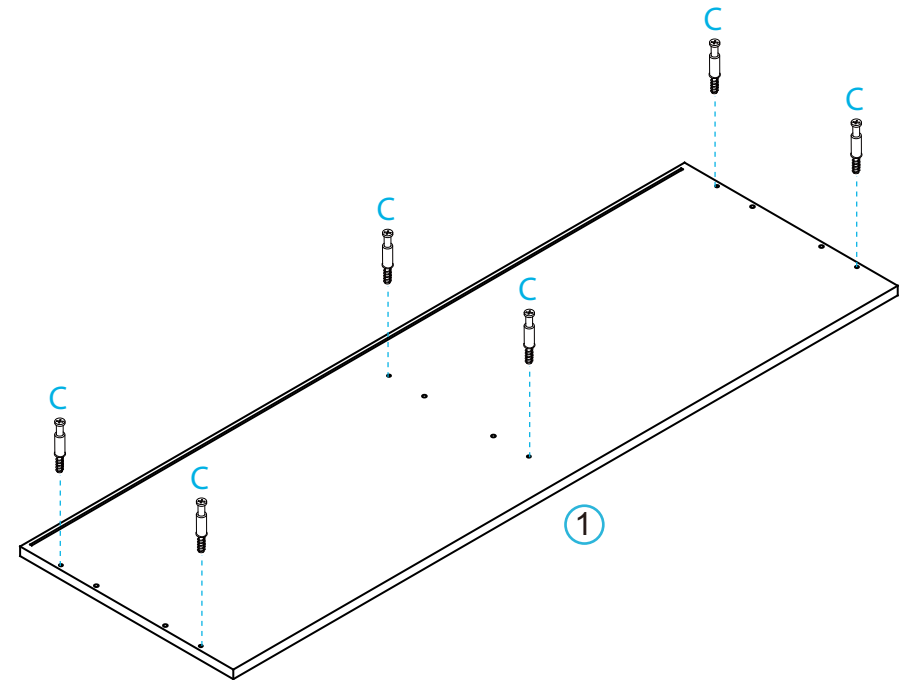
mocka

13



Slide panel [8] between the grooves of panels [3] and [4].

14



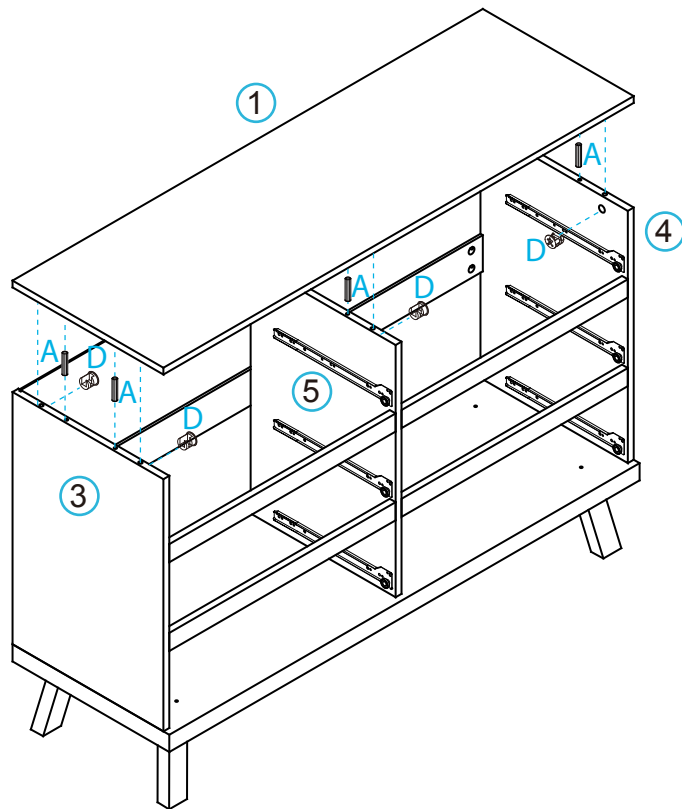
Insert 6x bolts (C) into panel [1]. Tighten with a screwdriver.

Addi Six Drawer - Wide

Assembly Instructions

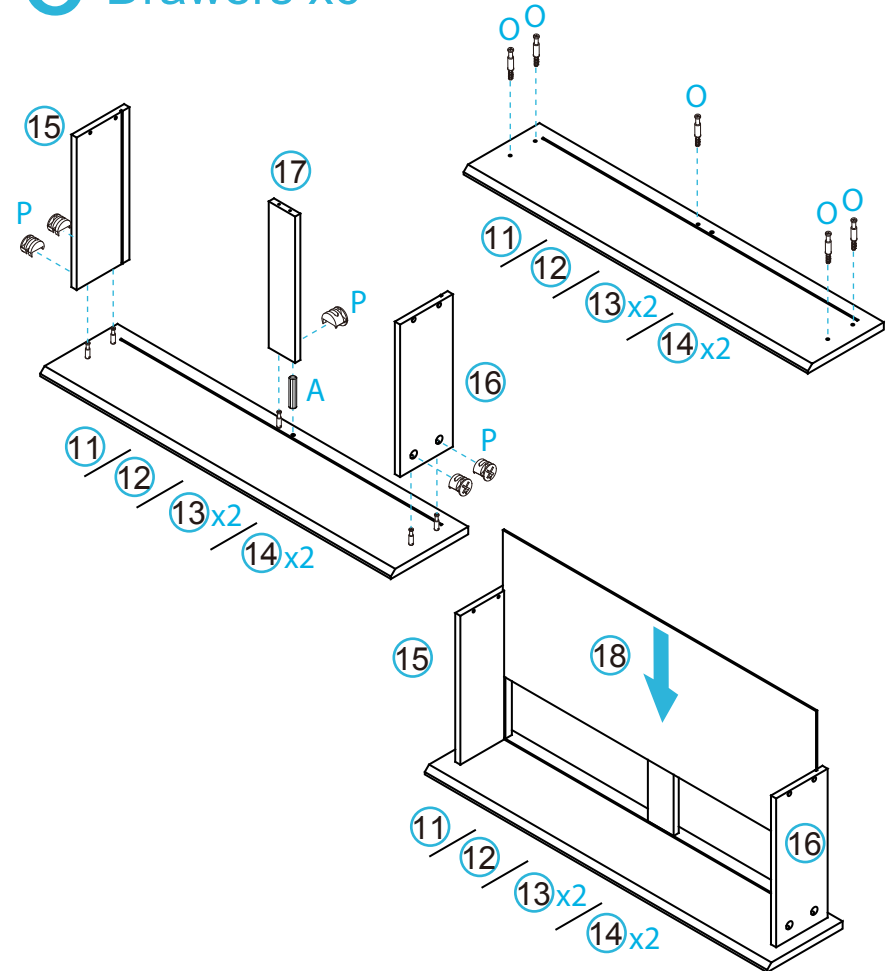
mocka

15



Attach panel [1] to the unit with 6x dowels (A) and secure with 6x locking nuts (D). Tighten with a screwdriver.

16 Drawers x6



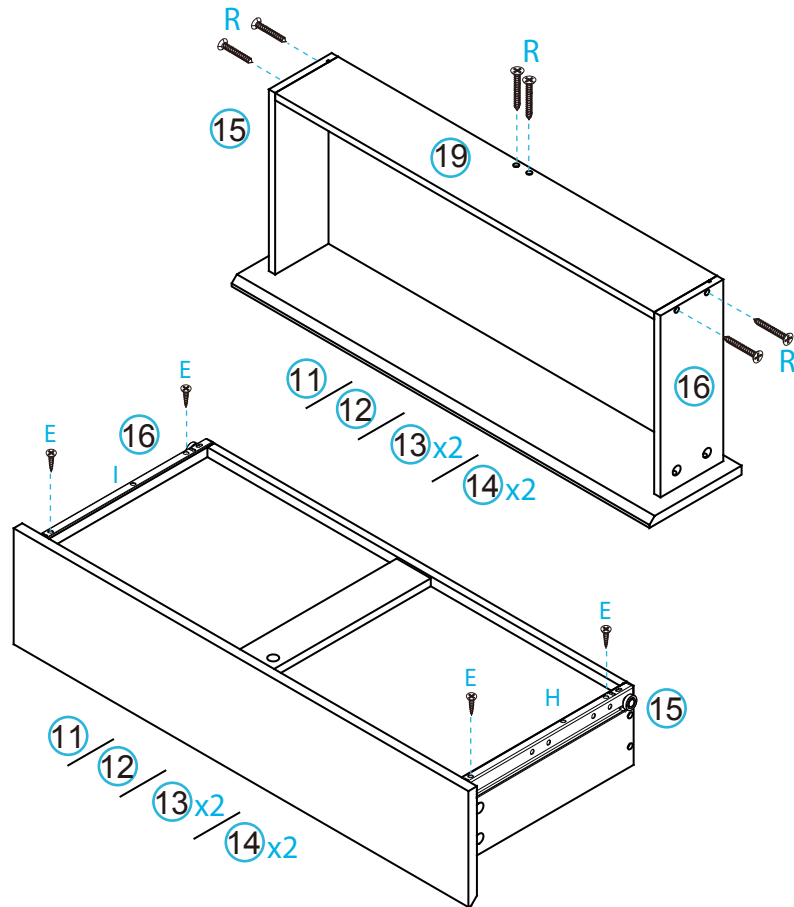
Insert 30x small bolts (O) into panels [11], [12], [13] and [14]. Secure panels [15], [16] and [17] to panels [11], [12], [13] and [14] with 6x dowel (A) and 30x small locking nuts (P). Tighten with a screwdriver. Slide panel [18] down along the grooves between panels [15] and [16] to form the base of the drawer.

Addi Six Drawer - Wide

Assembly Instructions

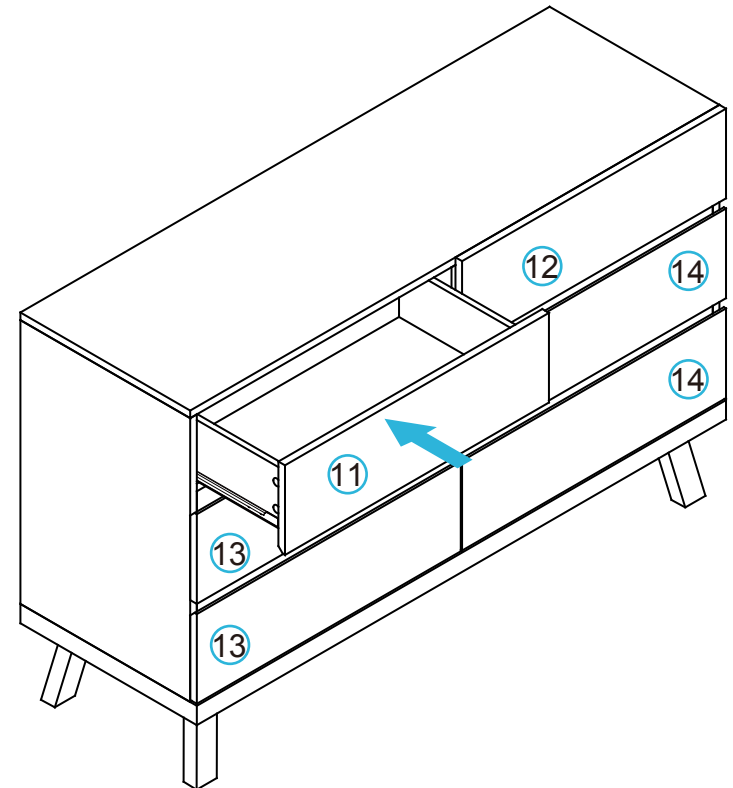
mocka

17 Drawers x6



Attach panel [19] to panels [15], [16] and [17] using 36x screws (R). Now attach 6x slide rail (I) to panel [16] and 6x slide rail (H) to panel [15] as shown. Secure with 24x small screws (E) and tighten with a screwdriver.

18



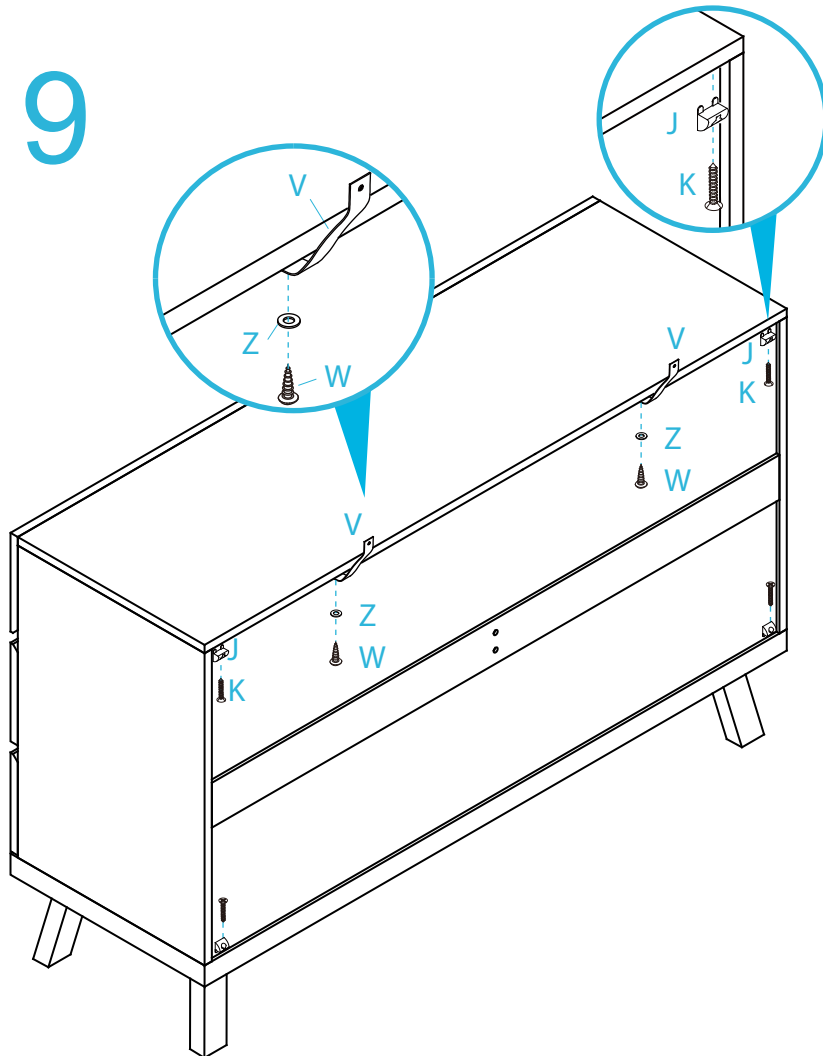
Insert the assembled drawers into the unit ensuring they slide smoothly along the rails.

Addi Six Drawer - Wide

Assembly Instructions

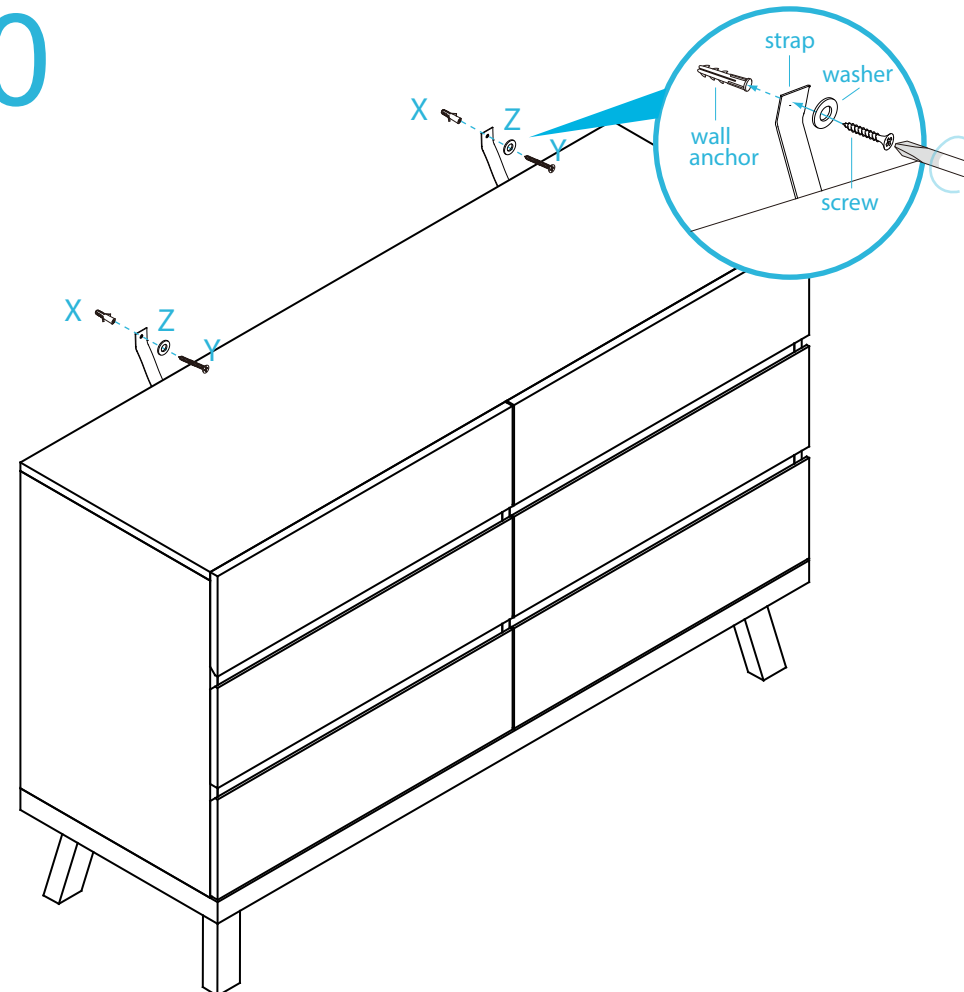
mocka

19



Attach 4x wedges (J) into the corners of the back of the unit and secure with 4x screws (K). Tighten with a screwdriver. Attach 2x safety straps (V) to the top of the back side of the unit as shown using 2x washers (Z) and 2x screws (W). Tighten with a screwdriver.

20



Once assembled lift furniture into place, do not drag. Use a drill to create a small hole lining up with the top of the safety strap (V). Fasten to wall using 2x washers (Z), 2x wall anchors (X) and 2x screws (Y). Ensure unit is balanced and steady before use. You're done, enjoy!